



**INTERIOR
EXTERIOR**

DTM ACRYLIC
ACRYLIC PRIMER/FINISH



GREAT PAINT GREAT PEOPLE

olearypaint.com

DTM ACRYLIC PRIMER/FINISH

DTM ACRYLIC PRIMER/FINISH is a waterborne coating designed to provide corrosion resistance in commercial and light industrial applications. Formulated for adhesion to a variety of surfaces, it forms a tight, flash rust resistant bond to clean steel. Streamline product mixes by using this single-source product to prime and finish prepared steel, galvanized, and factory-primed surfaces.

DTM ACRYLIC PRIMER/FINISH is formulated for professional application on commercial, light industrial, and maintenance projects. This versatile coating can be applied to hand rails, metal doors and frames, trim, steel supports, galvanized duct work, metal siding, and many other surfaces. It can be topcoated with a variety of coatings or left as a satin finish coat on interior or exterior surfaces.

FEATURES

- Direct to Metal Acrylic
- Single-Source Primer/Finish
- Excellent Adhesion and Durability
- Low Odor, Low-VOC

BENEFITS

Prime & Finish

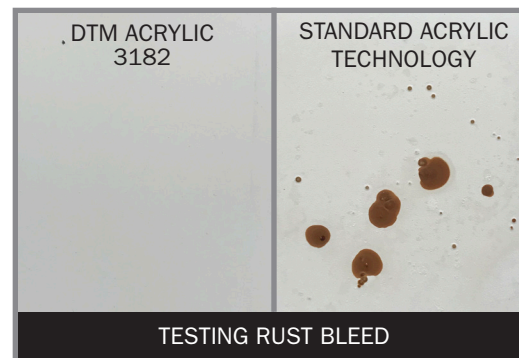
Priming and finishing with the same product can reduce the number of overall coats needed to complete projects saving on labor and material costs.

Rust-Inhibitive Finish

Added rust-inhibitors block flash rust allowing this waterborne coating to be applied directly to clean metal surfaces.

Low Odor Formula

Low odor waterborne formula minimizes the impact on other trades and personnel in occupied spaces.



TECHNICAL INFORMATION

APPLICATION INFORMATION

Drying Time at 77° F 50% R.H:

To Touch: 30 minutes*

Recoat: 2 hour*

* Cooler temperatures and higher relative humidity will extend dry times

Recommended Spreading Rate:

200-425 sq. ft./gal to achieve

Tight Rust: 7-8 mils WFT; 3-3.4 mils DFT

Clean Meta: 4-5 mils WFT: 1.7-2.1 DFT

Solids Content:

Volume: 43% ± 2 Weight: 55% ± 2

BASES: SATIN - 3182 SERIES

EQUIPMENT RECOMMENDATIONS

Roller: ¼" – ½" nap shed-resistant cover or lambswool cover

Brush: 100% nylon or synthetic blend

Airless: Minimum ¾ GPM with .015" tip @ 2300-2700 PSI

HVLP: Twin-stage turbine, 5 – 8 PSI, .051 to .070 projector set

SAFETY AND COMPLIANCE

VOC Content:

< 275 g/L 2.3 lbs./Gal

FINISHING RECOMMENDATIONS

STEEL: DTM Acrylics are self-priming when applied in two coats.

GALVANIZED: Product is self-priming.

MASONRY – Self-priming or O'Leary 5090 Masonry Sealer.

CONCRETE: Self-Priming or O'Leary 529-11 Latex Block Filler.

DRYWALL: Use O'Leary 50 Block-It.

PLASTER: Use O'Leary 50 Block-It.

WOOD: Use O'Leary 50 Block-It. DTM Acrylic is not recommended as a coating for exterior wood siding.